



大明制冷  
DAMING REFRIGERATION

# DMZL

Professional Compressor Manufacturer  
专业制冷压缩机制造商

浙江大明制冷科技有限公司  
ZHEJIANG DAMING REFRIGERATION TECHNOLOGY CO.,LTD



 活塞式制冷压缩机  
RECIPROCATING COMPRESSOR

 螺杆式制冷压缩机  
SCREW COMPRESSOR

# 打造民族品牌 创建百年企业

品质为本，

创新为魂，

大明制冷秉承质量至上的理念，

致力于为世界制造更优、更好的压缩机。

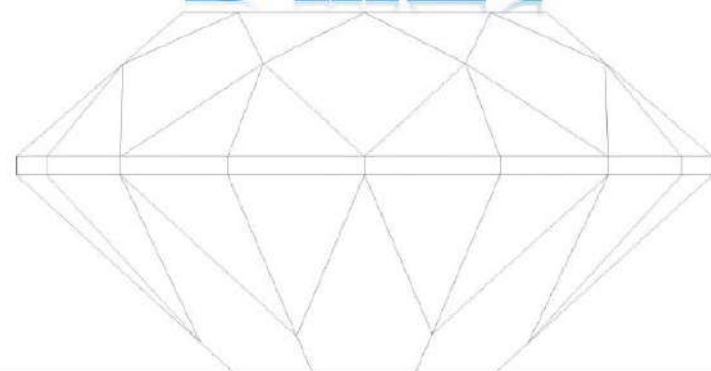
Quality-oriented,

Innovation-focused,

Adhering to the idea of quality-first,

We are committed to producing the best compressor.

## DMZL



**追求卓越，缔造完美**  
Persuing Excellence, Making Perfection



**“静”心发挥，“劲”力表现**  
Low Vibration, Powerful Capacity



# DMZL

## 大明制冷

### DAMING REFRIGERATION

浙江大明制冷科技有限公司，是一家专业从事制冷压缩机和压缩冷凝机组等制冷设备设计、研发、制造和销售的科技型民营企业，旗下拥有半封闭活塞式制冷压缩机品牌“金明”、半封闭涡旋式制冷压缩机品牌“SCROLL”和半封闭螺杆式制冷压缩机品牌“RFC”。

公司建有专业的制冷压缩机生产基地，拥有厂房3万余平米，引进了多种高精尖进口加工设备，建立了现代化的制冷压缩机和压缩冷凝机组装配线，并配备有专业的仓储中心和物流配送中心。

公司拥有三十多年的制冷压缩机制造经验，组建了一支国际国内制冷精英构成的技术团队，技术力量雄厚。公司还聘请专业的管理咨询机构针对性地建立起现代化的高效管理模式，以提升企业的管理水平。

公司以“打造民族品牌、创建百年企业”为目标，遵循“品质为本、创新为魂”的经营理念，以匠心做好产品，以创新求无限生机，努力将“大明制冷”打造成国产压缩机民族品牌、中国一流制冷压缩机制造商。

Zhejiang Daming Refrigeration Technology Co.,Ltd. is a private company specialized in designing, producing and marketing of refrigeration compressor and condensing unit, including semi-hermetic reciprocating compressor, scroll compressor, screw compressor and air&water cooled condensing unit.

We own a manufacturing base which is over 30,000 square meters, including precise processing workshop with advanced machines and logistic department.

Meanwhile, Daming has a powerful technical team that consists of experienced engineers and technicians. Every single employee make their best effort to ensure perfect products' quality and operation efficiency.

We aim at building "Daming" into a well-known national brand as well as a century enterprise with quality and creation, being a top compressor manufacturer.





## 生产设备

大明制冷拥有专业的制冷压缩机及冷凝机组生产基地和成熟的生产技术以及精密的制造与测试设备。企业现有厂房三万余平米，拥有现代化的加工车间，其中引进了CNC数控立式加工中心、数控卧式镗床、多孔钻床及超声波清洗机等高精设备，拥有制冷压缩机和冷凝机组自动化生产线，并建立了制冷压缩机性能检测中心，具有完善的加工、生产和检测能力，确保每一件产品的卓越性能。



## FACILITIES & EQUIPMENT

Daming have a professional manufacturing base, advanced technology, precise equipment and facilities, our factory covers an area more than 30,000 square meters which including a modernized processing workshop with CNC Process Center, horizontal boring machines, two automatic producing lines of compressor & condensing unit, and a properties testing center. Now Daming have the capability of making complete range compressor and ensuring every product's perfect performance.

# HONOR & CERTIFICATES

资质荣誉



DAMING REFRIGERATION

# Advanced, Professional Credible, Steady

力求领先，追求专业，  
诚信经营，稳健发展。

创建“大明”品牌，是每个员工孜孜不倦追求的目标和理想，高新技术和高起点的产品结构是实现理想和目标的硬件，严格的管理和“大明制冷”人严谨、细实的工作作风，是完成目标的软件。“大明”是年轻的，更是充满生机和无限希望的，面对激烈的市场竞争，我们将以更优质的产品服务于社会。

To build "Daming" as a famous national brand is the goal diligently pursued by every employee in Daming group. The high technology, perfect product structure and the strict management, meticulous working principle are hardware and software for achieving this goal. More than young, Daming is full of vigour and infinite hope. Facing fierce competition, we will provide more qualified products to the market.



# 目录 CONTENTS

## 活塞式制冷压缩机 Reciprocating Compressor

1	产品特点 Products Features	11
	型号标识 Nomenclature	12
	应用范围 Application Scope	13
	技术参数 Technical Data	15

2	制冷量表 Performance Data	
	R22	21
	R404A/R507A	27

## 螺杆式制冷压缩机 Screw Compressor

1	型号标识 Nomenclature	31
	应用范围 Application Scope	32
	技术参数 Technical Data	33

2	制冷量表 Performance Data	
	R22	37
	R404A	45



产品特点 Products features

大明制冷压缩机适用于各种工况工质，力求最大限度地满足您对制冷系统的要求。

The compressors of Daming suit different working condition and refrigerants, try to maximally satisfy your requirements for the refrigerating system.

- 1 技术成熟，结构紧凑 / Developed technology, compact dimension  
体积小，空间要求小 / Small volume and space
- 2 高精度加工，确保压缩机各项指标达标 / High precision machining to ensure the compressor confirm with the standard  
数控加工中心加工壳体 / CNC processing center  
特殊工艺保证三孔同心度 / Concentricity due to specific processing technology  
最小的死点间隙 / minimal dead space
- 3 运行平稳，震动小，噪音低 / steady operation, small vibration and low noise  
绝佳的稳定性 / Excellent stability
- 4 使用R22、R404等工质，符合国际环保要求 / Refrigerant like R22 and R404 are adopted to protect the environment  
适用于低温、中高温等各种工况 / For mid & low temperature application
- 5 电子保护装置，有效保护电机 / Electrical motor protect device  
PTC温度监控装置 / PTC sensor
- 6 耐磨的驱动件，使用寿命长 / wear resistant driver gear  
镀铬的活塞环，铝制活塞 / Chrome plated piston rings and aluminium pistons  
硬化处理过的曲轴 / Hardened crank-shaft  
低摩擦轴套 / Less friction
- 7 高效阀板组设计，制冷量大，能耗低 / Efficient valve plate design, high refrigerating capacity and low energy consumption  
高效的吸排气压缩比率 / Efficient compression rate  
阀片为瑞典进口钢带锻造，耐冲击 / Valve reed made of imported impact resistant spring steel
- 8 零部件通用程度高，拆修维护方便 / General spare parts, convenient for maintenance.

型号标识 Nomenclature

BFS31—BFS151

BF 半封闭  
Semi-hermetic

S 型号  
Model

3 匹数  
Horse-power

1 设计系列编号  
Series code

4S151D—6S501G

4/6 缸数  
Cylinders

S 型号  
Model

15 匹数  
Horse-power

1 设计系列编号  
Series code

D/G D指低温，G指中高温  
D for low condensing temperature,  
G for mid & high condensing temperature

2YD-2.2—6WG-50.2

2/4/6 缸数  
Cylinders

Y/V/W 指机型  
Type

D/G D指低温，G指中高温  
D for low condensing temperature,  
G for mid & high condensing temperature

2 匹数  
Horse-power

2 设计系列编号  
Series code

6WDS-20.2—6WDS-30.2

6 缸数  
Cylinders

W 指机型  
Type

DS 双级压缩  
Double Stage

20 匹数  
Horse-power

2 设计系列编号  
Series code



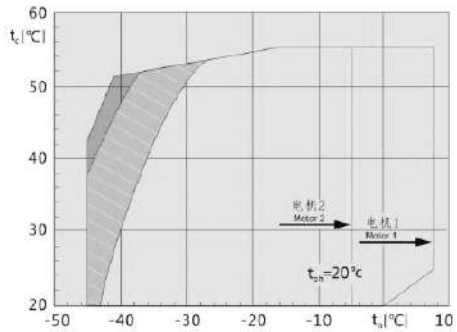
应用范围

基于吸气温度20°C

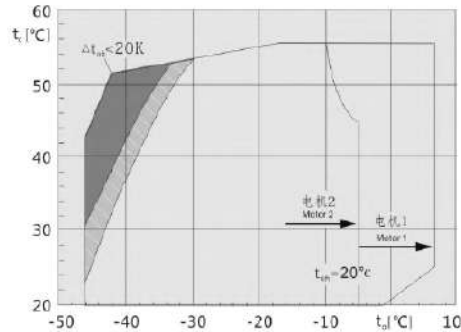
Application Scope

Suction gas temperature 20°C

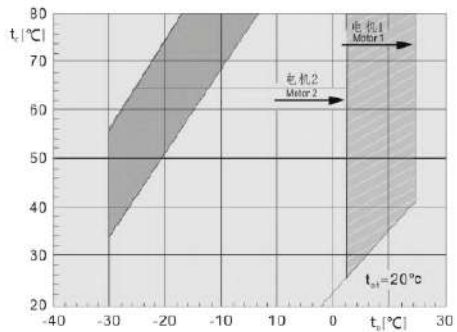
R404A•R507A  
2YD-2.2—4YG-9.2



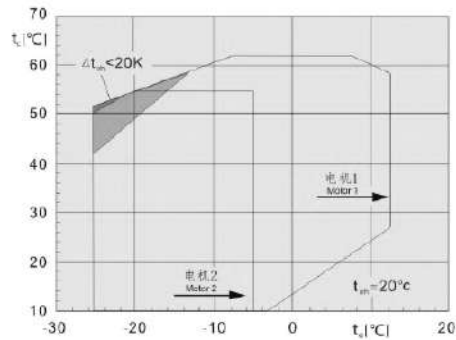
R404A•R507A  
4YD-8.2—6WG-50.2  
4S151D—6S501G



R134a



R407C



$t_e$  Evaporating temperature(°C)  $t_e$  蒸发温度(°C)  
 $t_g$  Suction gas temperature(°C)  $t_g$  吸气温度(°C)  
 $\Delta t_s$  Suction superheat(K)  $\Delta t_s$  吸气过热度(K)  
 $t_c$  Condensing temperature(°C)  $t_c$  冷凝温度(°C)

Additional cooling or max. 0°C suction gas temperature  
 Additional cooling  
 Additional cooling & limited suction gas temperature  
 Suction superheat > 10K  
 附加冷却或最高0°C吸气温度  
 附加冷却  
 附加冷却+限制最高吸气温度  
 吸气过热度 > 10K

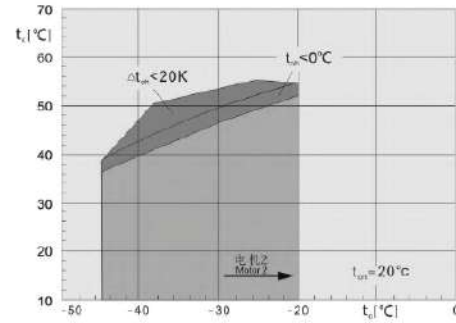
应用范围

基于吸气温度20°C

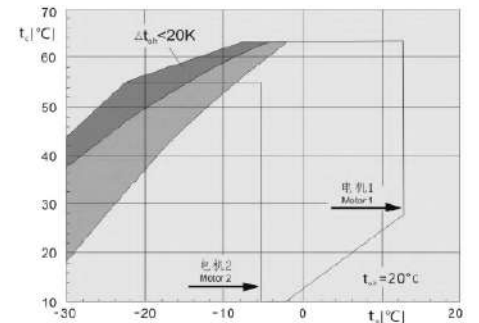
Application Envelope

Suction gas temperature 20°C

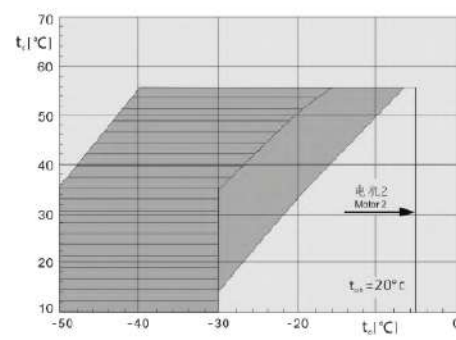
R22 空气冷却-直接吸气冷却 Air cooling-direct suction  
2YD-2.2—4YD-5.2



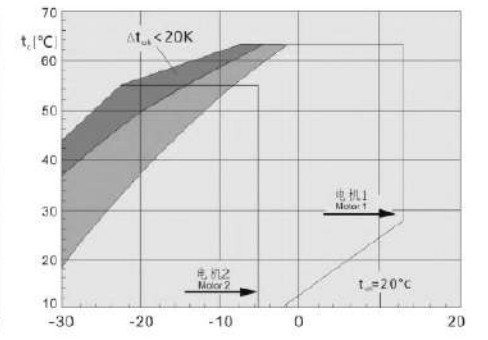
R22 吸气冷却 Suction gas cooling  
2YD-2.2—4YG-9.2



R22  
4YD-8.2—6WD-40.2 4S151D—6S401D



R22  
4YD-8.2—6WG-50.2 4S151D—6S501G



$t_e$  Evaporating temperature(°C)  $t_e$  蒸发温度(°C)  
 $t_g$  Suction gas temperature(°C)  $t_g$  吸气温度(°C)  
 $\Delta t_s$  Suction superheat(K)  $\Delta t_s$  吸气过热度(K)  
 $t_c$  Condensing temperature(°C)  $t_c$  冷凝温度(°C)

Additional cooling  
 Additional cooling & limited suction gas temperature  
 Additional cooling & liquid injection cooling system  
 附加冷却  
 附加冷却+限制最高吸气温度  
 附加冷却+喷液冷却系统

技术参数/ Technical Data

压缩机 型号 Compressor Model	电机 名义 功率 Nominal Motor Power Hp/kW	排气量 Displacement m <sup>3</sup> /h 50/60Hz	缸数×直径 ×行程 Number Of Cylinder× Diameter× Stroke mm	吸、排气接管 Suction, Discharge Line mm		油注入量 Oil Volume L	电源 Power Supply V/φ/Hz	电气参数 Electrical Parameter		曲轴箱加热器 Crankcase Heater (220V) W	供油方式 Oil Supply Method	重量 Weight kg
				DL Discharge Valve	SL Suction Valve			最大工作 电流(A) Max Operating Current	启动、堵转 电流(A) Starting/ Locked Current			
BFS31	3/2.2	12.2/14.6	2×φ47.6×39.2	φ16	φ19.05	1.25	380- 420/3/50 440- 480/3/60	5.2	24/26	60	飞溅式润滑 Splashing lubrication	62
BFS41	4/3	14.7/17.8	2×φ54×37	φ19.05	φ25.4	1.85		7.6	38/44	60		85
BFS51	5/3.7	18.4/22.1	2×φ54×46	φ19.05	φ25.4	1.85		7.6	38/44	60		87
BFS81	8/5.5	26.6/32.1	2×φ64×48	φ25.4	φ31.75	3.5		15	74/81	120		133
BFS101	10/7.5	38/43.2	2×φ64×64	φ25.4	φ31.75	3.5		15.6	93/103	120		157
BFS151	15/10.5	54/64.8	3×φ64×64	φ28	φ38.1	4.8		22.3	133/150	180		172
4S151D	15/10.5	73.6/88.8	4×φ70×55	φ28	φ42	4		31	81/132	140	183	油泵供油 Forced- lubrication
4S251G	25/18.5	73.6/88.8	4×φ70×55	φ28	φ54	4.5		45	116/193	140	203	
4S201D	20/15	84.5/101.9	4×φ75×55	φ28	φ54	4.5		37	97/158	140	192	
4S301G	30/22	84.5/101.9	4×φ75×55	φ28	φ54	4.5		53	135/220	140	206	
6S251D	25/18.5	110.5/133.4	6×φ70×55	φ35	φ54	4.75		45	116/193	140	224	
6S351G	35/25.5	110.5/133.4	6×φ70×55	φ42	φ54	4.75		61	147/262	140	235	
6S321D	30/22	126.6/153.0	6×φ75×55	φ42	φ54	4.75		53	135/220	140	228	
6S401G	40/30	126.6/153.0	6×φ75×55	φ42	φ54	4.75		78	180/323	140	238	
6S401D	40/30	151.6/183.0	6×φ82×55	φ42	φ54	4.75		78	180/323	140	239	
6S501G	50/37	151.6/183.0	6×φ82×55	φ42	φ54	4.75		92	226/404	140	241	

技术参数/ Technical Data

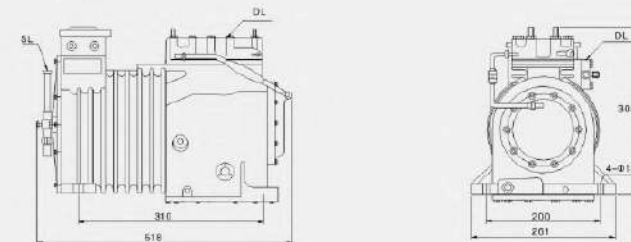
压缩机 型号 Compressor Model	电机 名义 功率 Nominal Motor Power Hp/kW	排气量 Displacement m <sup>3</sup> /h 50/60Hz	缸数×直径 ×行程 Number Of Cylinder× Diameter× Stroke mm	吸、排气接管 Suction, Discharge Line mm		油注入量 Oil Volume L	电源 Power Supply V/φ/Hz	电气参数 Electrical Parameter		曲轴箱加热器 Crankcase Heater (220V) W	供油方式 Oil Supply Method	重量 Weight kg
				DL Discharge Valve	SL Suction Valve			最大工作 电流(A) Max Operating Current	启动、堵转 电流(A) Starting/ Locked Current			
2YD-2.2	2/1.5	13.4/16.2	2×φ50×39.3	φ16	φ22	1.5	220-240Δ /380- 420Y/3/50 265-290Δ /440- 480Y/3/60	11.9/6.9	53.7/30.7	120	离心润滑 Centrifugal lubrication	67.5
2YG-3.2	3/2.2	13.4/16.2	2×φ50×39.3	φ16	φ22	1.5		13.5/7.8	64/37	120		70.5
2YD-3.2	3/2.2	16.2/19.6	2×φ55×39.3	φ16	φ22	1.5		14.6/8.5	64/37	120		70
2YG-4.2	4/3	16.2/19.6	2×φ55×39.3	φ16	φ22	1.5		16.4/9.4	76.6/44.2	120		70
4YD-3.2	3/2.2	18.1/21.8	4×φ41×39.3	φ16	φ22	2		15.9/9.2	76.6/44.2	120		82
4YG-5.2	5/3.7	18.1/21.8	4×φ41×39.3	φ16	φ22	2		18.7/10.8	107.7/62.2	120		86
4YD-4.2	4/3	22.7/27.4	4×φ46×39.3	φ22	φ28	2		18.5/10.7	92.7/53.2	120		84
4YG-6.2	6/4.4	22.7/27.4	4×φ46×39.3	φ22	φ28	2		22.9/13.2	107.7/62.2	120		86
4YD-5.2	5/3.7	26.8/32.4	4×φ50×39.3	φ22	φ28	2		23.4/13.5	107.7/62.2	120		85.5
4YG-7.2	7/5.1	26.8/32.4	4×φ50×39.3	φ22	φ28	2		27.5/15.9	142.8/82.4	120		88.5
4YD-6.2	6/4.4	32.5/39.2	4×φ55×39.3	φ22	φ28	2		27.5/15.9	142.8/82.4	120		90.5
4YG-9.2	9/6.6	32.5/39.2	4×φ55×39.3	φ22	φ28	2		34.5/20	142.8/82.4	120		90.5
4YD-8.2	8/5.5	41.3/49.9	4×φ60×42	φ26	φ35	2.6		17	49/31	120		104
4YG-12.2	12/8.8	41.3/49.9	4×φ60×42	φ26	φ35	2.6		24	69/113	140		141
4YD-10.2	10/7.5	48.5/58.5	4×φ65×42	φ26	φ35	2.6		21	59/99	140		139
4YG-15.2	15/10.5	48.5/58.5	4×φ65×42	φ26	φ35	2.6		31	81/132	140		147
4YD-12.2	12/8.8	56.2/67.9	4×φ70×42	φ26	φ35	2.6	24	69/113	140	141		

技术参数 / Technical Data

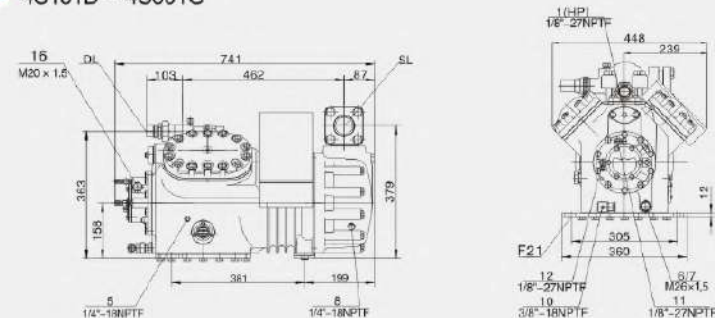
压缩机型号 Compressor Model	电机名义功率 Nominal Motor Power Hp/kW	排气量 Displacement m <sup>3</sup> /h 50/60Hz	缸数×直径×行程 Number Of Cylinder × Diameter × Stroke mm	吸、排气阀接管 Suction, Discharge Line mm		油注入量 Oil Volume L	电源 Power Supply V/φ/Hz	电气参数 Electrical Parameter		曲轴箱加热器 Crankcase Heater (220V) W	供油方式 Oil Supply Method	重量 Weight kg
				DL Discharge Valve	SL Suction Valve			最大工作电流(A) Max Operating Current	启动、堵转电流(A) Starting/ Locked Current			
4YG-20.2	20/15	56.2/67.9	4 × φ70 × 42	φ26	φ42	2.6		37	97/158	140	离心润滑 Centrifugal lubrication	150
4VD-15.2	15/10.5	73.6/88.8	4 × φ70 × 55	φ26	φ42	4		31	81/132	140		183
4VG-25.2	25/18.5	73.6/88.8	4 × φ70 × 55	φ26	φ54	4.5		45	115/193	140		203
4VD-20.2	20/15	84.5/101.9	4 × φ75 × 55	φ26	φ54	4.5		37	97/158	140		182
4VG-30.2	30/22	84.5/101.9	4 × φ75 × 55	φ26	φ54	4.5		53	135/220	140		206
6WD-25.2	25/18.5	110.5/133.4	6 × φ70 × 55	φ35	φ54	4.75	380-420Y/3/50	45	115/193	140		224
6WG-35.2	35/25.5	110.5/133.4	6 × φ70 × 55	φ42	φ54	4.75	440-480Y/3/60	61	147/262	140	油泵供油 Forced-lubrication	235
6WD-30.2	30/22	126.8/153.0	6 × φ75 × 55	φ35	φ54	4.75		53	135/220	140		228
6WG-40.2	40/30	126.8/153.0	6 × φ75 × 55	φ42	φ54	4.75		78	180/323	140		238
6WD-40.2	40/30	151.6/183.0	6 × φ82 × 55	φ42	φ54	4.75		78	180/323	140		239
6WG-50.2	50/37	151.6/183.0	6 × φ82 × 55	φ42	φ54	4.75		92	225/404	140		241
6WDS-20.2	20/15	73.6/88.8 88.8/104.5	6 × φ70/70 × 55	φ35	φ42	4.75		37	97/158	140		220
6WDS-25.2	25/18.5	84.5/101.9 101.9/121.1	6 × φ75/75 × 55	φ35	φ42	4.75		45	115/193	140		233
6WDS-30.2	30/22	101.1/120.5 122.0/150.9	6 × φ82/82 × 55	φ35	φ42	4.75		53	135/220	140		234

压缩机各接口位置和外形尺寸图 Connections and Dimension

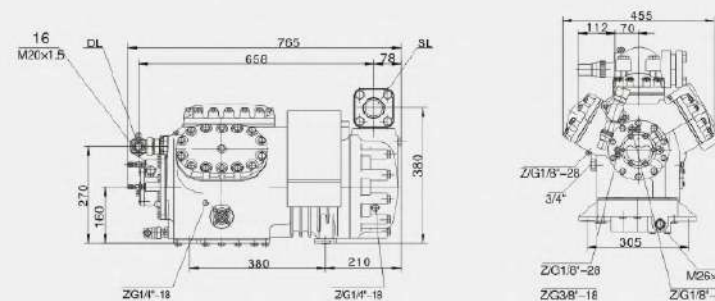
▶ BFS31---BFS151



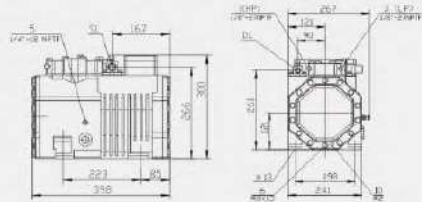
▶ 4S151D---4S301G



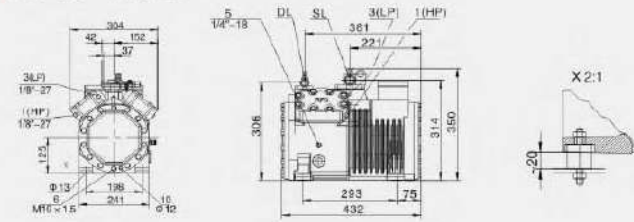
▶ 6S251D---6S501G



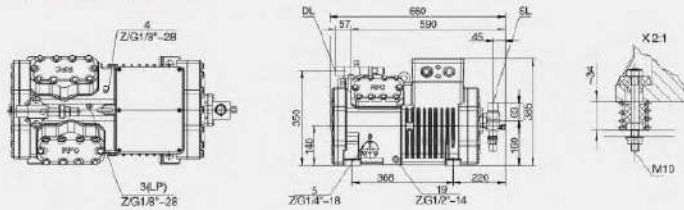
▶ 2YD-2.2—2YG-4.2



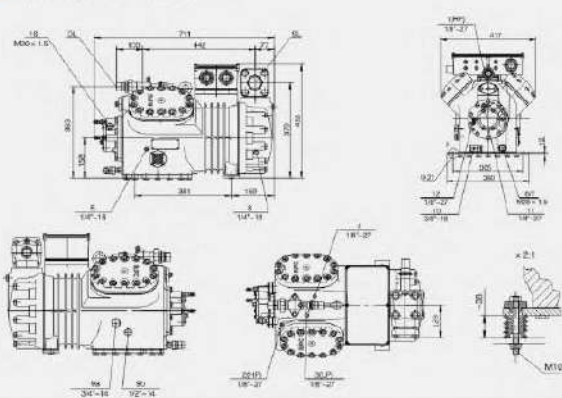
▶ 4YD-3.2—4YG-9.2



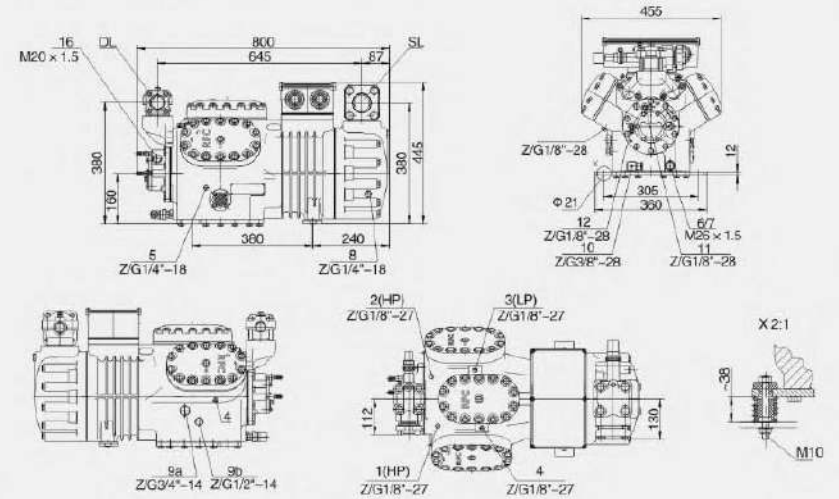
▶ 4YD-8.2—4YG-20.2



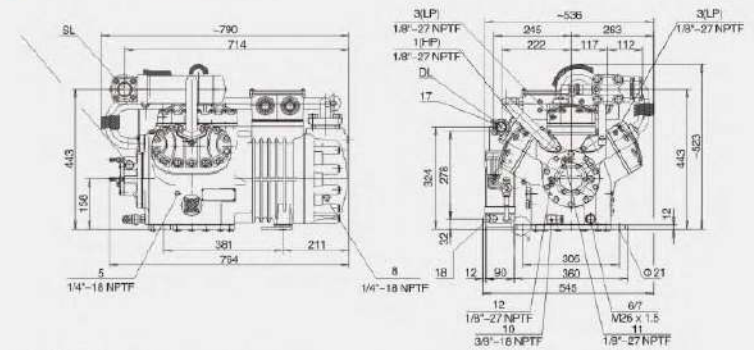
▶ 4YD-15.2—4YG-30.2



▶ 6WD-25.2—6WG-50.2



▶ 6WDS-20.2—6WDS-30.2



图示接管位置说明 Connection Positions

- |                           |                                    |                      |   |
|---------------------------|------------------------------------|----------------------|---|
| 1. 高压接口 (HP)              | 1. High pressure connection (HP)   | 9a. 气平衡接口 (并联运行)     | 9a. Gas equalisation (parallel operation)   |
| 2. 排气温度探头接口 (HP)          | 2. Discharge gas temp. sensor (HP) | 9b. 油平衡接口 (并联运行)     | 9b. Discharge gas temp. sensor (HP)         |
| 3. 低压接口 (LP)              | 3. Low pressure connection (LP)    | 10. 曲轴箱加热器           | 10. Crankcase heater                        |
| 4. CIC系统: 喷嘴接口 (不带液体过冷运行) | 4. CIC Systemspray nozzle          | 11. 油压高压接口+          | 11. Oil pressure connection+                |
| 5. 加油堵                    | 5. Oil fill plug                   | 12. 油压低压接口-          | 12. Oil pressure connection-                |
| 6. 放油口                    | 6. Oil drain                       | 16. 油压差开关'Delta-p'连接 | 16. Connection for oil monitoring (Delta-P) |
| 7. 油过滤器 (带磁螺栓)            | 7. Oil filter (magnetic screw)     | 21. 油服务阀接口           | 21. Connection for oil service valve        |
| 8. 回油口 (按油分离器)            | 8. Oil return (oil separator)      | SL. 吸气阀接口            | SL. Connection for suction valve            |
|                           |                                    | DL. 排气阀接口            | DL. Connection for discharge valve          |

制冷量表/Performance Data R22

型号 Model	冷凝温度 Condensing Temperature °C	制冷量 Refrigerating Capacity Qo(W) 功率消耗 Power Consumption Pe(kW)														
		蒸发温度 Evaporating Temperature(°C)														
		12.5	10	7.5	5	0	-5	-10	-15	-20	-25	-30	-35	-40	-45	-50
BFS31	30	Qo					8430	6800	5350	4070	2730	1890				
		Pe					2.33	2.28	2.15	1.95	1.70	1.45				
	40	Qo					7380	5820	4530	3370						
	Pe					2.70	2.55	2.35	2.05							
	50	Qo					6300	4940	3840	2820						
	Pe					3.00	2.78	2.48	2.15							
BFS41	30	Qo			14350	12330				5180	3840	2500				
		Pe			3.01	2.93				2.80	2.68	2.50				
	40	Qo			13250	10620				9200	7270	5700				
	Pe			3.60	3.45				3.23	3.00	2.73					
	50	Qo			11570	9780				7910	6160	4760				
	Pe			4.18	3.93				3.60	3.25	2.88					
BFS51	30	Qo					13140	10760	8720	6860	5300	3940				
		Pe					3.50	3.35	3.15	2.90	2.63	2.30				
	40	Qo					11750	9600	7620	6000						
	Pe					4.08	3.80	3.50	3.15							
	50	Qo					10380	8370	6570	5030						
	Pe					4.55	4.20	3.78	3.30							
BFS81	30	Qo			28140	22790				19300	15580	12320	9650	7270	5350	
		Pe			5.07	4.91				4.69	4.42	4.10	3.75	3.35	2.95	
	40	Qo			25580	20630				16970	13480	10650	8260			
	Pe			6.25	5.85				5.42	4.97	4.50	4.00				
	50	Qo			23260	19180				14650	11740	9070	6740			
	Pe			7.03	6.55				6.00	5.40	4.75	4.15				
BFS101	30	Qo					26510	21620	17450	13720	10700	8140				
		Pe					7.15	6.75	6.25	5.75	5.20	4.65				
	40	Qo					23730	19420	15350	12100						
	Pe					6.20	5.70	5.10	4.50							
	50	Qo					21040	17090	13490	10580						
	Pe					9.15	8.30	7.50	6.65							
BFS151	30	Qo					38960	31750	25350	20170	15700	11980				
		Pe					10.30	9.80	9.10	8.25	7.40	6.60				
	40	Qo					34890	28260	22560	17800						
	Pe					11.80	10.90	9.90	8.85							
	50	Qo					30700	24880	19650	15580						
	Pe					13.10	11.80	10.75	9.50							
4S151D	30	Qo					52300	42700	34450	27350	21300	16400	12000	8310		
		Pe					12.73	11.93	11.01	9.98	8.82	7.73	6.58			
	40	Qo					46850	38100	30500	24050	18500	13840	9800	6440		
	Pe					14.91	13.81	12.50	11.18	9.75	8.67	7.30	5.90			
	50	Qo					41700	33700	26800	20800	15800	11500	7920	4970		
	Pe					17.11	15.67	14.13	12.47	10.85	9.21	7.63	5.79			
4S251G	30	Qo	99300	91200	83600	75500	63700	52600	42950	34650	27500	21400	16260			
		Pe	13.69	13.74	13.56	13.34	12.84	12.22	11.48	10.63	9.67	8.59	7.41			
	40	Qo	89700	82300	75400	69900	57000	47150	38350	30600	24250	19570	13940			
	Pe	16.75	16.47	16.16	15.82	15.05	14.17	13.18	12.07	10.85	9.52	8.08				
	50	Qo	80500	73800	67600	61700	51100	41950	33950	27050	21100	16030				
	Pe	19.56	19.16	18.74	18.27	17.25	16.10	14.83	13.44	11.94	10.33					
4S201D	30	Qo					60000	49850	39500	31400	24500	18940	13900	9670		
		Pe					14.64	13.67	12.63	11.51	10.29	8.85	7.40	6.10		
	40	Qo					53700	43700	35100	27750	21500	16080	11430	7530		
	Pe					17.30	16.04	14.60	13.07	11.42	10.35	8.75	7.14			
	50	Qo					47800	38750	30650	24200	18350	13000	9230	5700		
	Pe					20.10	18.40	16.65	14.88	13.14	11.23	9.10	7.05			
4S301G	30	Qo	114200	104800	96000	87800	73100	60400	49300	39800	31650	24700	18840			
		Pe	16.42	16.23	16.01	15.74	15.11	14.33	13.44	12.45	11.36	10.21	9.00			
	40	Qo	103000	94500	86500	79100	65700	54000	44000	35350	27950	21950	16330			
	Pe	19.78	19.46	19.09	18.68	17.74	16.67	15.49	14.20	12.83	11.40	9.92				
	50	Qo	92300	84600	77400	70700	58600	48100	39000	31200	24500	18410				
	Pe	23.40	22.90	22.30	21.70	20.40	19.04	17.57	15.05	14.49	12.81					
6S251D	30	Qo					78500	64100	51700	41950	31950	24600	18010	12460		
		Pe					19.10	17.89	16.51	14.96	13.23	11.34	9.70	8.09		
	40	Qo					70300	57200	45850	36100	27750	20750	14710	9680		
	Pe					22.40	20.70	18.94	16.79	14.63	13.01	10.96	8.95			
	50	Qo					62600	50600	40250	31550	23700	17840	11970	7440		
	Pe					25.60	23.60	21.20	18.68	16.38	14.81	11.97	8.66			

参数基于吸气温度20°C, 50Hz, 液体无过冷。Suction gas temperature 20°C, 50Hz, without liquid subcooling.  
 ■ 附加冷却或限制吸气温度。Additional cooling or limited suction gas temperature.  
 ■ 附加冷却和喷液冷却系统。Additional cooling & liquid injection cooling system.

制冷量表/Performance Data R22

型号 Model	冷凝温度 Condensing Temperature °C	制冷量 Refrigerating Capacity Qo(W) 功率消耗 Power Consumption Pe(kW)														
		蒸发温度 Evaporating Temperature(°C)														
		12.5	10	7.5	5	0	-5	-10	-15	-20	-25	-30	-35	-40	-45	-50
6S351G	30	Qo	149100	136900	125600	114800	95600	79000	64500	52000	41900	32200	24400			
		Pe	20.90	20.60	20.40	20.00	19.27	18.34	17.24	15.96	14.52	12.90	11.12			
	40	Qo	134600	123500	113200	10350	86000	70600	57600	46200	36400	28050	20900			
	Pe	25.20	24.70	24.30	23.70	22.60	21.30	19.78	18.12	16.29	14.30	12.14				
	50	Qo	120900	110900	101400	92700	76800	63000	51000	40600	31700	24050				
	Pe	29.40	28.80	28.10	27.40	25.90	24.20	22.30	20.20	17.92	15.50					
6S321D	30	Qo					90000	73500	59300	47100	36750	28400	20850	14480		
		Pe					22.00	20.50	18.96	17.27	15.43	14.48	12.59	10.65		
	40	Qo					80600	65900	52700	41600	32200	24100	17400	11900		
	Pe					26.10	24.10	21.90	19.61	17.14	15.50	13.10	10.68			
	50	Qo					71700	58200	46500	36300	27500	20050	13840	8670		
	Pe					30.10	27.60	25.00	22.31	19.71	16.85	13.79	10.68			
6S401G	30	Qo	171300	157200	144100	131800	109700	90600	74000	59700	47500	37100	28300			
		Pe	24.60	24.40	24.00	23.60	22.70	21.50	20.20	18.68	17.05	15.32	13.51			
	40	Qo	154600	141800	129800	118600	98500	81100	66000	53000	41900	32450	24500			
	Pe	29.70	29.20	28.60	28.00	26.60	25.00	23.20	21.30	19.26	17.11	14.89				
	50	Qo	138500	127000	115200	104100	86000	72200	58500	46800	36750	28200				
	Pe	35.20	34.40	33.50	32.60	30.70	28.60	26.40	24.10	21.70	19.38					
6S401D	30	Qo					103100	86800	70100	55900	43800	34000	25100	17600		
		Pe					27.40	25.50	23.50	21.20	18.92	17.07	14.95	12.96		
	40	Qo					93300	77700	62600	49650	38700	29100	20900	13960		
	Pe					31.30	29.50	27.00	24.30	21.40	18.61	15.80	13.06			
	50	Qo					85100	69200	55600	43500	33250	24450	17050	10390		
	Pe					30.40	28.50	26.00	23.60	20.80	17.80	15.20	12.54			
6S501G	30	Qo	201400	184800	169400	155000	129100	108700	87300	70600	56300					

制冷量表/Performance Data R22

型号 Model	冷凝温度 Condensing Temperature t	制冷量 Refrigerating Capacity Qo(W) 功率消耗 Power Consumption Pe(kW)															
		蒸发温度 Evaporating Temperature(t)															
		12.5	10	7.5	5	0	-5	-10	-15	-20	-25	-30	-35	-40	-45	-50	
4YG-6.2	30	Qo	29950	27500	25200	23050	19160	15800	12880	10360	8200	6350	4790				
		Pe	3.43	3.64	3.79	3.90	3.98	3.91	3.73	3.47	3.17	2.86	2.58				
	40	Qo	20750	24500	22400	20450	16630	13850	11190	8890	6910	5210	3770				
		Pe	4.97	5.03	5.03	5.00	4.83	4.56	4.22	3.84	3.46	3.12	2.84				
	50	Qo	23450	21450	19570	17810	14630	11850	9440	7350	5560	4020					
		Pe	6.31	6.22	6.09	5.94	5.56	5.12	4.65	4.18	3.77	3.43					
4YD-5.2	30	Qo					19140	15600	12540	10300	8110	6260	4600	3380			
		Pe					4.77	4.51	4.21	3.83	3.42	3.27	2.91	2.63			
	40	Qo					16690	13590	10600	8600	6800	5220	4050	2950			
		Pe					5.56	5.14	4.70	4.26	3.92	3.46	3.05	2.62			
	50	Qo					14490	11550	9020	7260	5570	4120	2950				
		Pe					6.23	5.56	5.09	4.67	4.23	3.82	3.39				
4YG-7.2	30	Qo	38400	33400	30600	28000	23250	19160	15610	12540	9910	7670	5760				
		Pe	4.21	4.37	4.49	4.57	4.63	4.56	4.49	4.15	3.85	3.51	3.15				
	40	Qo	32500	29750	27200	24850	20550	16830	13600	10600	8400	6540	4590				
		Pe	5.83	5.86	5.86	5.82	5.66	5.40	5.06	4.67	4.24	3.80	3.36				
	50	Qo	28560	26100	23600	21700	17830	14480	11660	9030	6850	4970					
		Pe	7.28	7.19	7.07	6.93	6.57	6.14	5.65	5.13	4.61	4.09					
4YD-6.2	30	Qo					22950	18740	15120	12000	9540	7070					
		Pe					5.76	5.48	5.16	4.80	4.39	3.91					
	40	Qo					20250	16410	13090	10230	7780	5790					
		Pe					6.62	6.19	5.72	5.22	4.68	4.06					
	50	Qo					17510	14010	10890	8360	6160						
		Pe					7.50	6.91	6.30	5.67	5.03						
4YG-9.2	30	Qo	43300	39750	36450	33360	27800	22950	18760	15120	12000	9330	7060				
		Pe	5.50	5.69	5.82	5.90	5.92	5.78	5.53	5.18	4.77	4.34	3.93				
	40	Qo	39900	35650	32600	29900	24700	20250	16420	13100	10240	7790	5710				
		Pe	7.45	7.42	7.36	7.26	7.06	6.64	6.21	5.72	5.20	4.68	4.12				
	50	Qo	34250	31350	28650	26100	21500	17500	14010	10890	8360	6150					
		Pe	9.27	9.05	8.82	8.57	8.06	7.50	6.92	6.30	5.66	4.99					
4YD-8.2	30	Qo					30700	25200	20450	16370	12880	9830	7320	5220			
		Pe					7.30	6.91	6.44	5.89	5.29	4.60	4.01	3.35			
	40	Qo					27100	22160	17840	14150	11000	8200	5920	4010			
		Pe					8.39	7.77	7.11	6.42	5.70	5.06	4.31	3.51			
	50	Qo					23450	19050	15250	11830	9050	6640	4610	2910			
		Pe					9.40	8.58	7.73	6.90	6.09	5.25	4.37	3.43			
4YG-12.2	30	Qo	57100	52400	48100	44000	36700	30350	24800	20050	15930	12410	9410				
		Pe	6.90	7.04	7.19	7.19	7.17	7.00	6.70	6.28	5.76	5.15	4.46				
	40	Qo	50800	48650	42750	39100	32550	26800	21850	17550	13850	10880	7980				
		Pe	9.07	9.03	8.85	8.84	8.52	8.09	7.59	6.95	6.27	5.55	4.78				
	50	Qo	44400	40700	37250	34050	28200	23150	18770	14980	11730	8950					
		Pe	11.07	10.87	10.64	10.38	9.80	9.13	8.39	7.59	6.74	5.88					
4YD-10.2	30	Qo					36650	29250	23700	18940	14960	11330	8360	5820			
		Pe					8.44	8.03	7.49	6.86	6.14	5.46	4.70	3.95			
	40	Qo					31450	25700	20700	16390	12710	9500	6850	4630			
		Pe					9.74	9.03	8.25	7.42	6.58	5.68	4.83	4.02			
	50	Qo					27300	22150	17700	13800	10510	7700	5330	3350			
		Pe					10.92	9.94	8.93	7.95	6.91	5.89	4.93	4.04			
4YG-15.2	30	Qo	63400	52800	57600	52700	43800	36150	29500	23750	18810	14590	11000				
		Pe	8.33	8.45	8.52	8.54	8.45	8.20	7.81	7.28	6.65	5.93	5.14				
	40	Qo	60900	55800	51200	46900	38650	31950	26000	20600	16360	12550	9320				
		Pe	10.65	10.57	10.45	10.29	9.86	9.35	8.72	8.00	7.21	6.38	5.48				
	50	Qo	53300	48900	44700	40800	3330	27700	22400	17660	13940	10610					
		Pe	12.66	12.58	12.27	11.84	11.23	10.45	9.50	8.50	7.74	6.73					
4YD-12.2	30	Qo					41150	33750	27400	21900	17210	12990	9600	6760			
		Pe					10.91	9.49	8.79	8.02	7.13	6.22	5.41	4.55			
	40	Qo					36650	29950	24150	19170	14910	11040	7960	5400			
		Pe					11.46	10.60	9.86	8.86	7.64	6.66	5.67	4.75			
	50	Qo					32050	26050	20650	16150	12280	8930	6200	3880			
		Pe					12.77	11.63	10.43	9.27	8.09	6.94	5.84	4.81			
4YG-20.2	30	Qo	79100	72600	66600	61000	50600	41900	34250	27600	21900	16980	12810				
		Pe	10.60	10.62	10.59	10.53	10.29	9.92	9.41	8.77	8.02	7.15	6.18				
	40	Qo	70600	64800	59300	54200	45000	37000	30100	24100	18920	14500	10750				
		Pe	13.15	13.02	12.85	12.63	12.06	11.34	10.51	9.58	8.59	7.54	6.48				
	50	Qo	61900	56700	51900	47400	39250	32150	26000	20650	16050	12130					
		Pe	15.74	15.40	15.01	14.59	13.65	12.90	11.46	10.29	9.02	7.73					
4YD-15.2	30	Qo					52300	42700	34450	27350	21300	16400	12000	8310			
		Pe					12.73	11.53	11.01	9.98	8.92	7.86	6.73	5.98			
	40	Qo					46850	38100	30500	24050	18500	13500	9640	6640			
		Pe					14.91	13.81	12.55	11.10	9.78	8.67	7.30	5.90			
	50	Qo					41700	33700	26800	20900	15800	11500	7920	4970			
		Pe					17.11	15.67	14.13	12.47	10.85	9.21	7.53	5.79			

参数基于吸气温度20℃, 50Hz, 液体无过冷。 Suction gas temperature 20℃, 50Hz, without liquid subcooling.  
 ■ VARICOO系统, 附加冷却, 改变吸气阀位置。 VARICOO system additional cooling position of suction valve changed.  
 ■ 附加冷却或限制吸气温度。 Additional cooling or limited suction gas temperature.  
 ■ 附加冷却和喷液冷却系统。 Additional cooling & liquid injection cooling system.

制冷量表/Performance Data R22

型号 Model	冷凝温度 Condensing Temperature t	制冷量 Refrigerating Capacity Qo(W) 功率消耗 Power Consumption Pe(kW)															
		蒸发温度 Evaporating Temperature(t)															
		12.5	10	7.5	5	0	-5	-10	-15	-20	-25	-30	-35	-40	-45	-50	
4VG-25.2	30	Qo	99300	91200	83600	76500	63700	52600	42950	34650	27500	21400	16260				
		Pe	13.89	13.74	13.56	13.34	12.84	12.22	11.48	10.63	9.67	8.59	7.41				
	40	Qo	89700	82300	75400	68900	57300	47150	38350	30800	24250	18570	13840				
		Pe	16.75	16.47	16.16	15.82	15.05	14.17	13.18	12.07	10.85	9.52	8.08				
	50	Qo	80500	73800	67600	61700	51100	41950	33950	27050	21100	16030					

制冷量表/Performance Data R22

型号 Model	冷凝温度 Condensing Temperature °C	制冷量 Refrigerating Capacity Qo(W) 功率消耗 Power Consumption Pe(kW)																	
		蒸发温度 Evaporating Temperature(°C)																	
		7.5	5	0	-5	-10	-15	-20	-25	-30	-35	-40	-45	-50	-55	-60	-65	-70	
BFS51	30	24000	22200	18600	15400	12600	10200	8500	6700	5300	4000	3000							
	40	20400	18900	15800	13100	10700	8700	7200	5700	4500	3400	2600							
BFS81	30	31400	28700	24000	20000	16400	13400	10700	8500	6500	4900	3700							
	40	26400	24100	20200	16800	13800	11300	9000	7100	5500	4200	3100							
BFS101	30	44800	44200	35100	29000	23900	19400	15600	12300	9500	7200	5300							
	40	38100	35600	29800	24600	20300	16500	13200	10500	8100	6100	4500							
BFS151	30	69000	64500	54300	45200	37300	30500	25600	20600	16300	11700	8900							
	40	58700	54800	46200	38400	31700	25900	21800	16700	13000	9900	7500							
4S151D	30	Qo			58500	48400	39700	32200	25750	20250	15560	11630	8350						
		Pe			15.76	14.84	13.79	12.63	11.40	10.10	8.77	7.43	6.10						
	40	Qo			49850	41150	33600	27100	21500	16730	12660	9240	6380						
4S251G	30	Qo			80700	83200	69700	57900	47750	38950	31350	24800	19210	14460	10450				
		Pe			16.14	16.07	15.72	15.14	14.38	13.41	12.32	11.11	9.81	8.46	7.08				
	40	Qo			77460	71000	59500	49400	40850	33000	26450	20800	15930	11800	8320				
4S201D	30	Qo			67100	55500	45400	36750	29350	23000	17600	13090	9260						
		Pe			18.22	17.12	15.89	14.55	13.12	11.62	10.08	8.53	6.97						
	40	Qo			57200	47300	38700	31200	24800	19250	14540	10540	7160						
4S301G	30	Qo			103600	95300	79900	66500	54900	44900	36250	28600	22450	17040	12490				
		Pe			19.21	19.07	18.57	17.81	16.84	15.70	14.41	13.02	11.57	10.09	8.61				
	40	Qo			89100	81800	68600	57000	47000	38250	30700	24200	18610	13860	9850				
4S251D	30	Qo			23.37	22.88	21.73	20.38	18.88	17.26	15.56	13.81	12.06	10.33	8.68				
		Pe			27.01	26.20	24.46	22.58	20.60	18.56	16.50	14.45	12.45	10.54	8.78				
	40	Qo			87900	72500	59300	47800	38000	29700	22650	16740	11850						
4S321D	30	Qo			23.50	22.15	20.58	18.83	16.94	14.95	12.89	10.81	8.75						
		Pe			27.20	25.18	23.00	20.68	18.28	15.82	13.36	10.92	8.54						
	40	Qo			50500	41150	33000	26950	19920	14760	10390								
4S401G	30	Qo			136000	124800	104500	86900	71800	58400	47000	37200	28800	21700	15720				
		Pe			25.11	24.84	24.07	23.04	21.77	20.29	18.64	16.93	14.91	12.89	10.81				
	40	Qo			116300	106600	89300	74100	60900	49450	39600	31100	23800	17670	12490				
4S401D	30	Qo			29.81	29.20	27.79	26.14	24.30	22.29	20.14	17.88	15.53	13.13	10.71				
		Pe			34.17	33.23	31.19	28.96	26.56	24.04	21.41	18.71	15.96	13.20	10.46				
	40	Qo			98300	81200	66400	53600	42700	33350	25400	18760	13210						
4S501G	30	Qo			26.77	25.07	23.21	21.20	19.08	16.84	14.54	12.17	9.76						
		Pe			30.86	28.50	26.00	23.38	20.88	17.96	15.07	12.21	9.34						
	40	Qo			57600	46900	37600	29550	22600	16720	11710								
4S501D	30	Qo			156100	143200	120000	99900	82500	67400	54300	43150	33600	25550	18730				
		Pe			30.46	29.91	28.66	27.20	25.57	23.77	21.82	19.75	17.56	15.28	12.93				
	40	Qo			133400	122400	102700	85400	70300	57300	46000	36300	28000	20900	14940				
4S601G	30	Qo			35.49	34.61	32.70	30.62	28.38	26.02	23.54	20.96	18.30	15.57	12.80				
		Pe			40.19	38.97	36.42	33.73	30.91	27.99	24.99	21.92	18.79	15.83	12.46				
	40	Qo			110800	101800	85400	70900	58300	47350	37800	29550	22500	16450	11330				
4S601D	30	Qo			80700	83200	69700	57900	47750	38950	31350	24800	19210	14460	10450				
		Pe			16.14	16.07	15.72	15.14	14.38	13.41	12.32	11.11	9.81	8.46	7.08				
	40	Qo			77460	71000	59500	49400	40850	33000	26450	20800	15930	11800	8320				

参数基于吸气温度20°C, 50Hz, 液体无过冷。Suction gas temperature 20°C, 50Hz, without liquid subcooling.  
■ 附加冷却或限制吸气温度。Additional cooling or limited suction gas temperature.

制冷量表/Performance Data R22

型号 Model	冷凝温度 Condensing Temperature °C	制冷量 Refrigerating Capacity Qo(W) 功率消耗 Power Consumption Pe(kW)																	
		蒸发温度 Evaporating Temperature(°C)																	
		7.5	5	0	-5	-10	-15	-20	-25	-30	-35	-40	-45	-50	-55	-60	-65	-70	
6S401D	30	Qo			118800	96100	80100	64700	51400	40100	30500	22400	15600						
		Pe			31.46	29.74	27.89	25.37	22.84	20.14	17.34	14.49	11.83						
6S501G	30	Qo			100900	83100	67600	54300	42600	32950	24600	17570	11680						
		Pe			36.00	33.43	30.59	27.55	24.36	21.06	17.73	14.40	11.14						
6S501D	30	Qo			184400	169300	142200	118600	96100	80400	65200	52100	40500	31400	23450				
		Pe			56.24	55.76	54.49	52.87	50.95	48.79	46.43	43.94	41.38	38.79	36.23				
2YC-2.2	30	Qo			157900	145000	121700	101300	83600	68300	55000	43600	33850	25600	18620				
		Pe			43.13	42.10	39.80	37.22	34.43	31.47	28.40	25.28	22.15	19.09	16.14				
2YC-3.2	30	Qo			131000	120200	100800	83800	69600	56000	44800	36150	26950	19960	14090				
		Pe			49.60	48.21	44.85	41.30	37.60	33.83	30.02	26.24	22.53	18.97	15.59				
2YC-4.2	30	Qo			101100	83400	68100	54900	43900	33900	25700	18800	13000						
		Pe			2.72	2.59	2.43	2.25	2.05	1.83	1.58	1.35	1.09						
2YC-5.2	30	Qo			81400	69800	58700	45300	36500	27200	20200	14200	9200						
		Pe			3.15	2.94	2.7	2.44	2.17	1.88	1.58	1.28	0.98						
2YC-6.2	30	Qo			69900	59400	49500	39000	27800	20900	14900	9900							
		Pe			3.55	3.25	2.93	2.59	2.25	1.9	1.54	1.18							
2YC-7.2	30	Qo			15940	14630	12260	10200	8420	6870	5540	4400	3420	2500	1890				
		Pe			2.79	2.8	2.77	2.71	2.5	2.45	2.28	2.06	1.86	1.62	1.37				
2YC-8.2	30	Qo			13510	12390	10380	8510	7080	5750	4600	3610	2760	2040	1430				
		Pe			3.49	3.44	3.32	3.10	2.86	2.74	2.49	2.21	1.92	1.62	1.31				
2YC-9.2	30	Qo			11110	10180	8500	7030	5740	4630	3660	2820	2110	1510	1000				
		Pe			4.11	4.02	3.8	3.55	3.27	2.96	2.63	2.26	1.93	1.57	1.2				
2YC-10.2	30	Qo			12470	10290	8400	6780	5380	4190	3180	2330	1630						
		Pe			3.33	3.15	2.95	2.72	2.46	2.21	1.93	1.64	1.35						
2YC-11.2	30	Qo			10510	8950	7040	5640	4440	3420	2550	1810	1200						
		Pe			3.85	3.58	3.29	2.98	2.65	2.32	1.97	1.62	1.27						
2YC-12.2	30	Qo			8590	7050	5710	4550	3540	2690	1950	1340							
		Pe			4.35	3.98	3.60	3.21	2.80	2.39	1.96	1.57							
2YC-13.2	30	Qo			19440	17840	14960	12450	10280	8400	6770	5380	4190	3180	2330				
		Pe			3.48	3.48	3.42	3.32	3.17	2.98	2.76	2.50	2.23	1.94	1.64				
2YC-14.2	30	Qo			16470	15110	12660	10520	8680	7050	5650	4450	3420	2540	1810				
		Pe			4.31	4.25	4.08	3.86	3.61	3.33	3.02	2.69	2.34	1.98	1.61				
2YC-15.2	30	Qo			1355														

制冷量表/Performance Data R404A/R507A

型号 Model	冷凝温度 Condensing Temperature °C	制冷量 Refrigerating Capacity Qo(W) 功率消耗 Power Consumption Pe(kW)																
		蒸发温度 Evaporating Temperature(°C)																
		7.5	5	0	-5	-10	-15	-20	-25	-30	-35	-40	-45	-50	-55	-60	-65	-70
4YG-7.2	30	Qo	32600	29900	25000	20800	17120	13950	11210	8960	6860	5160	3720					
		Pe	5.49	5.52	5.51	5.39	5.18	4.88	4.52	4.10	3.63	3.12	2.69					
	40	Qo	27500	25200	21100	17490	14350	11630	9270	7250	5510	4040	2800					
		Pe	6.51	6.75	6.55	6.26	5.88	5.43	4.91	4.35	3.74	3.11	2.47					
	50	Qo	22500	20600	17210	14230	11620	9350	7360	5690	4240	3010	1960					
		Pe	7.98	7.83	7.46	7.00	6.46	5.86	5.20	4.50	3.78	3.03	2.28					
4YD-5.2	30	Qo				24950	20650	16900	13670	10900	8540	6530	4840	3420				
		Pe				6.65	6.36	5.98	5.52	5.01	4.45	3.86	3.25	2.63				
	40	Qo				21100	17420	14200	11420	9030	6980	5240	3770	2540				
		Pe				7.64	7.17	6.63	6.03	5.37	4.67	3.94	3.21	2.47				
	50	Qo				17320	14220	11520	9190	7180	5460	4000	2770					
		Pe				8.61	7.98	7.28	6.51	5.71	4.87	4.01	3.14					
4YG-9.2	30	Qo	39800	35600	29900	24900	20600	16880	13660	10890	8530	6530	4840					
		Pe	6.85	6.87	6.82	6.64	6.36	5.98	5.53	5.01	4.45	3.86	3.25					
	40	Qo	32860	30150	26300	21100	17410	14210	11440	9050	7000	5250	3770					
		Pe	8.35	8.27	8.01	7.64	7.18	6.63	6.02	5.36	4.66	3.94	3.21					
	50	Qo	27060	24830	20900	17390	14310	11620	9280	7240	5480	3960	2960					
		Pe	9.90	9.62	9.16	8.61	7.98	7.28	6.52	5.71	4.87	4.01	3.14					
4YD-9.2	30	Qo				39050	27250	22200	17890	14170	10990	8300	6040	4150				
		Pe				8.74	8.17	7.55	6.87	6.16	5.41	4.64	3.86	3.07				
	40	Qo				27750	22800	18480	14750	11560	8830	6520	4580	2960				
		Pe				9.06	9.05	8.20	7.34	6.46	5.57	4.66	3.74	2.81				
	50	Qo							18350	14790	11710	9070	6800	4980	3260			
		Pe							9.74	8.71	7.68	6.65	5.61	4.55	3.60			
4YG-12.2	30	Qo	51500	47200	39450	32750	26900	21900	17550	13830	10650	7960	5700					
		Pe	6.93	6.63	6.49	6.22	5.81	5.29	4.68	4.00	3.26	2.48	1.68					
	40	Qo	43600	39850	33300	27550	22600	18290	14530	11320	8590	6270	4320					
		Pe	10.66	10.47	9.99	9.40	8.72	7.96	7.15	6.29	5.40	4.51	3.62					
	50	Qo	35400	32400	27050	22350	18230	14650	11550	8880	6590	4650	3020					
		Pe	12.28	11.93	11.17	10.33	9.42	8.45	7.45	6.42	5.39	4.36	3.36					
4YD-10.2	30	Qo				36300	31600	25750	20700	16390	12690	9550	6910	4690				
		Pe				10.67	9.37	8.64	7.87	7.06	6.22	5.34	4.43	3.48				
	40	Qo				32300	26500	21500	17130	13400	10220	7520	5240	3350				
		Pe				11.39	10.45	9.47	8.45	7.41	6.35	5.30	4.25	3.22				
	50	Qo							21500	17290	13690	10550	7890	5640	3760			
		Pe							11.26	10.04	8.80	7.83	6.28	5.05	3.88			
4YG-15.2	30	Qo	61500	56400	47100	39050	32100	26000	20800	16320	12490	9240	6500					
		Pe	10.23	10.19	9.95	9.58	9.06	8.43	7.70	6.90	6.04	5.14	4.23					
	40	Qo	52200	47850	39950	33050	27050	21850	17360	13490	10190	7390	5020					
		Pe	12.41	12.14	11.51	10.79	9.99	9.11	8.18	7.19	6.17	5.13	4.07					
	50	Qo	42600	39000	32500	26750	21800	17430	13680	10460	7710	5380	3420					
		Pe	14.27	13.78	12.78	11.73	10.68	9.55	8.43	7.28	6.11	4.94	3.75					
4YD-12.2	30	Qo				44000	36250	29550	23750	18610	14580	11000	7960	5470				
		Pe				11.86	11.15	10.30	9.35	8.35	7.30	6.23	5.19	4.18				
	40	Qo				37900	30600	24800	19810	15610	11840	8740	6120	3950				
		Pe				13.39	12.33	11.18	9.97	8.71	7.44	6.19	4.99	3.87				
	50	Qo							24850	20000	15820	12210	9120	6510	4300			
		Pe							13.28	11.83	10.37	8.91	7.45	6.01	4.60			
4YG-20.2	30	Qo	71000	65100	54500	46250	37200	30250	24250	19070	14640	10860	7860					
		Pe	12.24	12.20	11.94	11.47	10.82	10.04	9.14	8.16	7.12	6.07	5.02					
	40	Qo	60500	55400	46250	38200	31250	25200	20000	15530	11730	8510	5820					
		Pe	14.78	14.49	13.79	12.91	11.91	10.80	9.62	8.40	7.16	5.95	4.78					
	50	Qo	49000	45650	37900	31100	25250	20150	15760	12010	8840	6180	3960					
		Pe	16.78	16.28	15.18	13.95	12.63	11.24	9.81	8.38	6.97	5.63	4.37					
4YD-15.2	30	Qo				58500	48400	39700	32200	25750	20250	15560	11630	8350				
		Pe				15.78	14.84	13.79	12.63	11.40	10.10	8.77	7.43	6.10				
	40	Qo				48850	41150	33600	27100	21500	16730	12660	9240	6380				
		Pe				18.16	16.80	15.34	13.82	12.25	10.65	9.05	7.47	5.93				
	50	Qo							33950	27600	22050	17330	13270	9820	6920			
		Pe							18.50	16.67	14.80	12.91	11.03	9.17	7.37			
4YD-25.2	30	Qo	90700	83200	69700	57900	47750	38950	31350	24800	19210	14460	10450					
		Pe	16.14	16.07	15.72	15.14	14.36	13.41	12.32	11.11	9.81	8.46	7.08					
	40	Qo	77400	71000	59500	49400	40650	33000	26450	20800	15930	11800	8320					
		Pe	19.56	19.22	18.37	17.32	16.11	14.76	13.31	11.78	10.20	8.60	7.00					
	50	Qo	64500	59100	49500	41000	33600	27200	21600	16630	12740	9260	6340					
		Pe	22.78	22.18	20.84	19.33	17.71	15.98	14.18	12.34	10.49	8.65	6.86					

参数基于吸气温度20°C, 50Hz, 液体无过冷。Suction gas temperature 20°C, without liquid subcooling.  
     附加冷却或限制吸气温度。Additional cooling or limited suction gas temperature.

制冷量表/Performance Data R404A/R507A

型号 Model	冷凝温度 Condensing Temperature °C	制冷量 Refrigerating Capacity Qo(W) 功率消耗 Power Consumption Pe(kW)																
		蒸发温度 Evaporating Temperature(°C)																
		7.5	5	0	-5	-10	-15	-20	-25	-30	-35	-40	-45	-50	-55	-60	-65	-70
4VD-20.2	30	Qo				67100	55500	45400	36750	29350	23000	17600	13060	9260				
		Pe				18.22	17.12	15.89	14.55	13.12	11.82	10.08	8.53	6.97				
	40	Qo				57200	47300	38700	31200	24600	19250	14540	10640	7160				
		Pe				20.94	19.36	17.58	15.93	14.13	12.30	10.47	8.65	6.89				
	50	Qo							36750	31650	25450	20100	15490	11510	8120			
		Pe							21.25	19.15	17.02	14.87	12.73	10.63	8.60			
4YD-30.2	30	Qo	103800	95300	79900	66500	54900	44900	36250	28600	22450	17040	12480					
		Pe	19.21	19.07	18.57	17.81	16.84	15.70	14.41	13.02	11.57	10.09	8.61					
	40	Qo	89100	81600	68600	57000	47000	38250	30700	24200	18610	13660	9950					
		Pe	23.07	22.38	21.73	20.38	18.88	17.26	15.58	13.81	12.06	10.33	8.68					
	50	Qo	74300	68200	57100	47400	38900	31500	25100	19580	14840	10810	7410					
		Pe	27.01	26.20	24.46	22.58	20.60	18.56	16.50	14.45	12.45	10.54	8.76					
6WD-25.2	30	Qo				87900	72500	59300	47800	38000	29700	22650	16740	11650				
		Pe				23.50	22.15	20.58	18.33	16.84	14.95	12.89	10.81	8.75				
	40	Qo				74700	61600	50200	40400	31600	24700	18500	13440	9130				
		Pe																